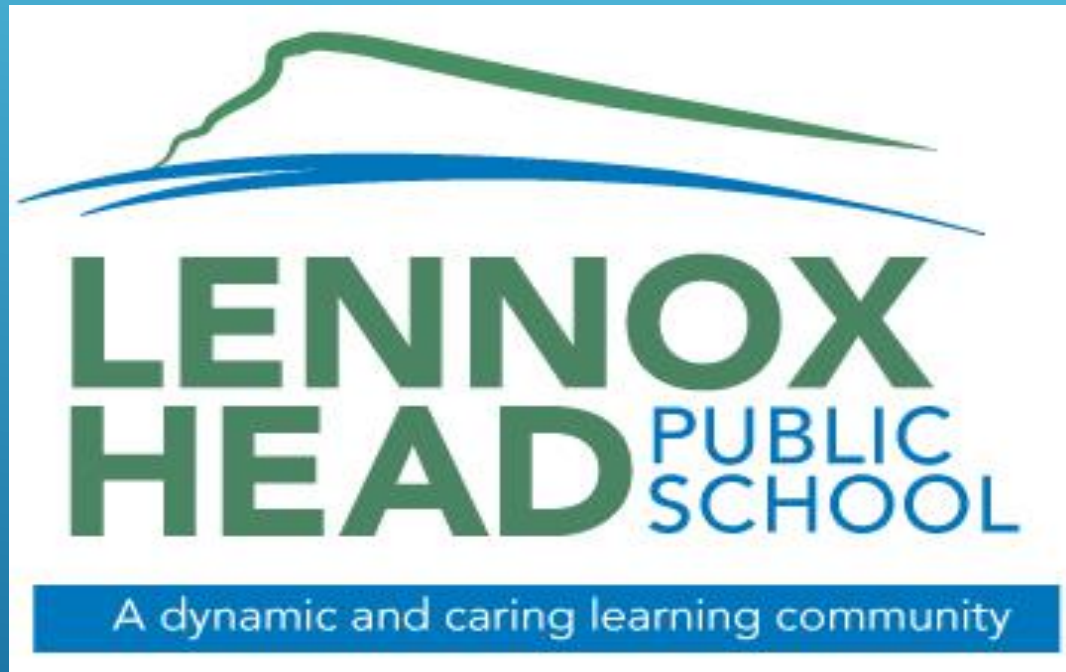


*Welcome to Lennox Head  
Public School  
Kindergarten 2025*



# Program

## Lennox Head Public School

Kindergarten 2025 Parent Information Evening

Wednesday 22 May 5:00 – 6:00pm

Welcome and introductions

Deborah Langfield(Principal)

Current kinder Team – Mrs Angela Dyer, Mrs Justine Thomas, Mrs Kate Wood, Miss Ikin and Miss Zerk

Our school - PowerPoint presentation

Orientation details

Classroom Visit

Questions and comments

# OUR SCHOOL TODAY

- 425 Students
- 20 classes
- 5 executive staff
- Experienced Office Staff
- Teacher/Librarian
- RFF- PDHPE Teacher
- Learning And Support Teachers
- School Counsellor – currently 2 days per week.
- Band/choir Tutor
- We will be moving to a new school on a new site by hopefully 2027. Keep an eye out for community updates.



- LHPS – Three Key Values: Respect, Responsibility, Integrity

CORE VALUES



# POSITIVE BEHAVIOUR FOR LEARNING



Are You

- SHOWING RESPECT
- BEING RESPONSIBLE
- ACTING WITH INTEGRITY
- All Kinder children work with year 6 students during orientation and when needed during their first year of school.



# Features of our school **GROUNDS**







# Grounds & Buildings





# Features of our school Hall





# Our Kinder Classrooms

Each class capped at 20 students



# Features of our school Library







## Healthy Canteen

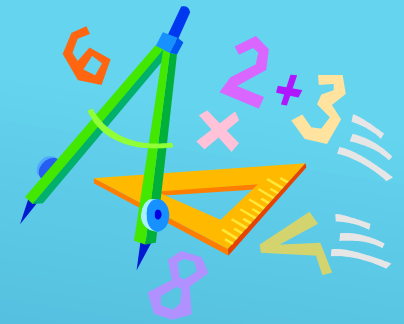
The canteen is open 5 days a week at present. All canteen ordering is done online through the Spriggy App. You will need to download this. There is information on this in your pack. The canteen does love to have volunteers, so if you can help please let us know.







# KEY LEARNING AREAS



English  
Mathematics  
Science and Technology  
Personal Development, Health and Physical Education  
Creative Arts – dance, drama, music and visual arts  
Human Society and Its Environment (History and Geography)





School band- instrument  
tuition from year 3 if  
requested.

School choirs junior and  
senior groups



- The P and C meet in weeks 3 and 8 of each term on a Tuesday evening at Club Lennox at 6:00pm. Meetings usually last no longer than an hour.
- This is a great opportunity to hear additional news re what is happening in the school and a chance to have input on some decisions regarding fundraising and purchasing resources for the school.
- It is a great way to connect with other parents and to support your child's school.

## P AND C ASSOCIATION

A decorative graphic consisting of several parallel white lines of varying lengths, slanted diagonally from the bottom right towards the top right, located in the lower right quadrant of the slide.



# Fortnightly Assembly

Friday-12.05pm odd weeks for K-2 students. Even weeks for 3-6 students



Before & After School Care  
(OOSH)

Vacation Care

Contact Rainbow Children's Centre

Ph: 6686 6621

Email: [rainbow@rainbowchildrenscentre.com.au](mailto:rainbow@rainbowchildrenscentre.com.au)

Available before and after school.





# Student Achievement Acknowledgement



**Buckett of Books Awards  
sponsored by Lois Buckett**

**Honour Students - 10 Gold Cards**

**Merit Students - 20 Gold Cards**

**Distinction Student - 30 Gold Cards**



**Student of the Week**

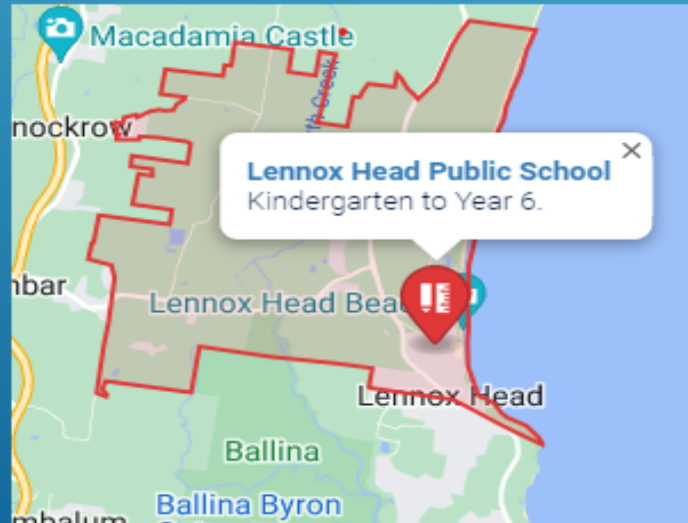


# ENROLMENT ZONE

We will enrol all children who reside within our school zone – that is west to close to the top of Ross Lane, North towards Broken Head, South to the Coast Road.

The school zone was changed in 2023– Epiq estate and North Creek Road area are no longer in our current zone. South of Coast Road is now pretty much zoned to Southern Cross Public School. If you are a younger sibling of someone already enrolled from that area, I can still enrol you. If you are in the position of no longer being in the zone, due to the change, you need to enrol as an out of zone application. These applications are then assessed.

If you go to [www.schoolfinder.education.nsw.gov.au](http://www.schoolfinder.education.nsw.gov.au) you can check your address there.



# ENROLMENT INFORMATION

This information is all on the letter in your pack –

How to enrol

Apply online . Go to the school website and click on the enrolment tab. Please ensure that you complete every section. If you select a preferred name for a child, their school records will have their actual title – eg Robert not Bob

If you are an Australian or New Zealand citizen or permanent resident you are eligible to complete the online enrolment application. You will then need to finalise the application at the school.

For more information, visit primary school enrolment  
<https://education.nsw.gov.au/public-schools/going-to-a-public-school/enrolment/primary-school-enrolment>.

# OUT OF ZONE ENROLMENT AND VISAS

Currently Lennox Head Public School is closed to Out of Zone Enrolments however you may like to visit out-of-area enrolment

<https://ooa.enrol.education.nsw.gov.au/?schoolCode=4184&catchmentLevel=primary>.

Out-of-area enrolment procedures are subject to the department's enrolment policy.

If you have received an offer for an out-of-area placement, visit the online enrolment sign in page to accept or decline the offer.

Temporary visas and international students

The Temporary Residents Program <https://www.deinternational.nsw.edu.au/study-options/study-programs/temporary-residents> has information about eligibility and the forms to complete an application.



## ▶ Enrolment Information - Bring to School

- ▶ Once you have completed the online Application to Enrol please bring to school the following student information for the school to sight and copy:

- ▶ Original Birth Certificate or Passport

- ▶ Immunisation Statement (available online from Medicare)

- ▶ Proof of residential address (rates notice, lease agreement or utility bill – NOT a driver's license).

- ▶ Your enrolment can't be completed until we have these things.

- ▶ Any additional needs or medical issues please include in your enrolment and provide us with relevant plans etc – eg asthma, anaphylaxis etc

- ▶ Other forms in your pack which you must also bring back completed

- General Permission Form and special religious education participation letter

- ▶ It would also be fantastic if we could enrolment details before the end of Term 3 – then it will ensure you receive all orientation and relevant school information.

# COMMUNICATION

Schoolbytes is our main method of communication. Once your child is enrolled you can download the APP next year.

In the interim, all information pertaining to Kinder orientation etc will be placed on the website.

You will receive information from us in the mail, prior to orientation with additional information.

<https://lennoxhead-p.schools.nsw.gov.au/>

# ATTENDANCE INFORMATION

## Attendance Policy

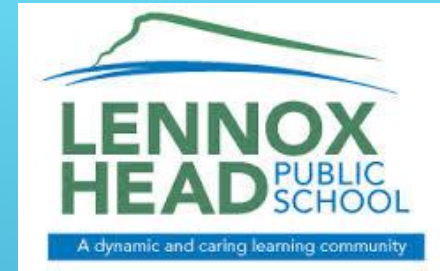
It is a requirement of the NSW Government that in a year that a student is turning 6 they must be enrolled to attend school. Children are expected to be at school everyday unless they have a valid reason not to attend.

These valid reasons are:

- Being sick
- Having an unavoidable medical appointment
- Being required to attend a recognised religious holiday
- Exceptional or urgent family circumstance e.g. attending a funeral
- If your child is away you will receive a text on the day of the absence. Please don't call the school. Respond to the text with the reason for the absence and it will be recorded in the system.
- The attendance of all students is monitored by the school and NSW Government attendance officers.



# SCHOOL PROSPECTUS



The majority of information relevant to the school is in the prospectus booklet in your pack. Please read this carefully as it should answer everything you need to know about our school. We will quickly look at this together now.

## Lennox Head Public School Student Wellbeing Policy and Procedures 2024

In this pack you will also find information regarding our school uniform. This can be purchased from School Locker in Ballina. All requirements are listed on the flyer in your pack.

# UNIFORM INFORMATION

## Summer Uniform

GIRLS: Princess line tunic, green & white check, action back, shirt collar, short sleeve self-trim.

UNISEX: Bottle green long legged loose shorts. Blue & Green polo shirt printed with green school logo to left, short sleeve. Girls: Bottle green skort or shorts.

## Winter Uniform

UNISEX: Bottle green tracksuit with top printed with school logo to left. Bottle green jacket or jumper with logo. Girls – may also wear bottle green tights or green leggings under skorts or dresses.

## Footwear / Hat

SHOES: Black closed-in shoes, any material and style - to be worn Monday to Thursday.

SOCKS: Bottle green, white or grey socks may be worn. Socks may be ankle length, or anklets (just above the shoe line). No colourful or patterned socks.

HAT: Green school hat to be worn every day.

NB – The price list is also in your pack – please label everything!!!

# Lennox Head Public School Uniform Choices





# TRAVELLING TO SCHOOL

As you are probably well aware parking is very limited around our school. If possible walk with your children to school, or park close by and walk them to a crossing or the gate.

- If you wish for your student to use the bus service, please complete the online application for bus travel
- If you do drive and park near the school, please ensure you adhere to all of the parking signs and never stop or park in the bus bay. The school is regularly patrolled by both council rangers and the police and disobeying parking signs =nasty fines.
- Please also follow all instructions given by our crossing supervisor Murray.
- It is appreciated if you can drop off quickly and depart quickly in the afternoons to avoid congestion.

# OUR SCHOOL DAY

9.00am: Arrive at school – Kinder for the first 4 weeks will have their own playground area at the front of the school.

9.30am: Classes begin

## SESSION 1: 2 Hours

11.30am: Break 1- Lunch/play

12.05 : Assembly – every 2<sup>nd</sup> Friday

## SESSION 2: 1 ½ hours

1.35pm: Break 2:- Snack/play

2.10pm

## SESSION 3: 1 ¼ hours

3.00pm: Classes finish for Kindergarten – for the first 4 weeks. After this Kinder will finish at 3:20pm. We will advise you when we make this change.

3.25pm: Classes finish - rest of the school.

Children leave school site. Walk or private transport or use the bus service

Supervision from 9.00am until second bus departs at approx. 3.50pm.

# TERM 4 PROGRAM

PARENTS AND CHILDREN ARE INVITED  
TO ATTEND 3 SESSIONS

## SESSION 1

**Tuesday 29 October 10.00am- 12:00pm**

**Children with parents- activities in Kindergarten rooms**

**For each session children will need to bring a hat, a drink bottle and wear enclosed shoes. They won't need a bag and don't need to wear a school uniform.**



# Session 2

**Tuesday 5 November**

**10.00am – 11am: Parent Session in the library.  
Information about the school**

**10.00am – 12:00pm: Session for Children in Kindergarten  
rooms**

**Activities Year 6 2025 students  
Tour of the school**

# *Session 3*

**Tuesday 12 November**

**10.00am – 12.00 noon: Sessions for children in  
Kindergarten rooms**

**Complete an activity with Year 6 helpers.**

# 2025 FIRST DAY

- Best Start Testing will occur for all students. Testing will commence Tuesday 4 February 2025. When all testing completed Kindergarten will commence school – potentially Friday 7 February – to be determined.

# CLASSROOM VISIT

Kindergarten classroom visits and Q  
and A with Kinder teachers

A decorative graphic consisting of several parallel white lines of varying thicknesses, slanted diagonally from the bottom left towards the top right, located in the lower right quadrant of the slide.